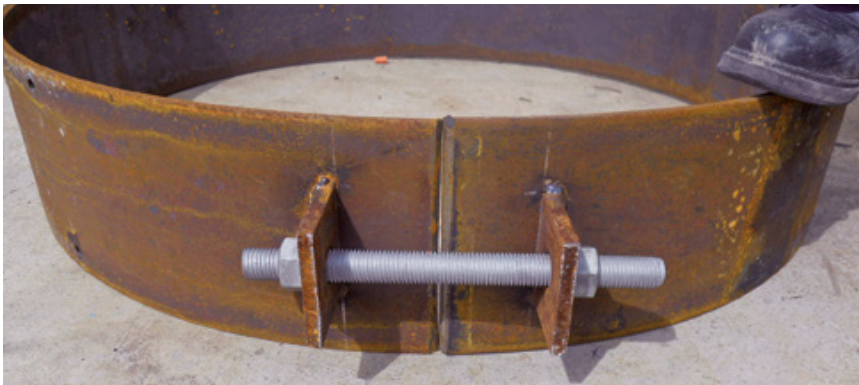


WELD COLLARS

TECHNICAL DATA

SINTAKOTE® STEEL PIPELINE SYSTEMS



Steel Mains Steel Pipeline System has weld collars available across a full size range and can be tailor-made to suit specific design parameters.

Weld Collars are generally manufactured from steel plate and supplied in accordance with AS/NZS 3678 or AS/NZS 3679, subject to size.

Weld collars are generally supplied as uncoated, plain rings. If required the following options are available:

- Clamping lugs and bolts to assist in onsite installation
- Test holes and plugs to facilitate onsite pneumatic testing of the joint

- Barrier coating system to provide temporary corrosion protection

- Weld bevel preparations

Various material grades are available to be compatible with mating product.

- Consult the Steel Mains Steel Pipeline Systems Design manual for design information

- Check with Steel Mains on material availability prior to placing orders

GENERAL APPLICATION

Steel Mains Weld Collars for Steel Pipeline Systems are suitable for use with potable water and waste water in above and below ground applications.*

For special application requirements, beyond what is specified in this datasheet, please contact Steel Mains.

*Only applies to Steel Mains recommended coating and lining systems. Please consult the design manual for further details.

TECHNICAL DATA

Size Range

114mm to 2500mm diameter

Operating Pressures

Maximum 3500kPa

Operating Temperatures

-40°C to 70°C

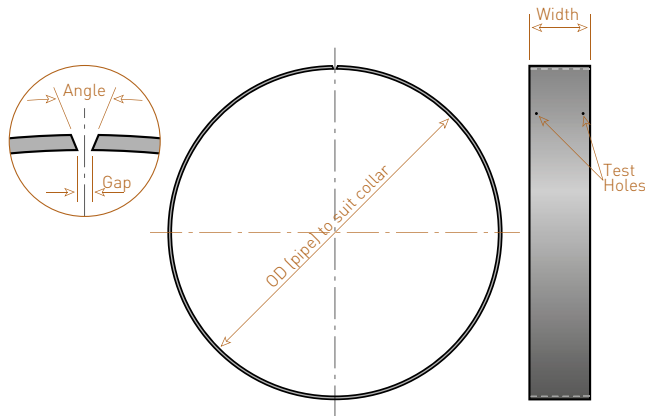
Certifications

AS/NZS ISO 9001

AS/NZS 4020

AS 1579 Standards Mark

IDENTIFICATION OF WELD COLLARS



SPECIFYING WELD COLLARS

1 - Diameter

Specify the outside steel shell diameter of pipe/fitting to suit collar. This is the weld collars inside diameter

2 - Width

Specify the collar width required.

Steel Mains standard weld collar widths are:

Pipe diameter	Width mm
114 - 168	100
>168 - 800	150
>800 - 1200	200
>1200	250

3 - Wall thickness

Nominate the wall thickness of the collar. This is generally one plate thickness greater than the pipe shell

4 - Lugs

Specify lugs and bolts details, if applicable

5 - Test holes

Specify test hole details if required. Steel Mains standard is two 1/8" BSP tapped holes - parallel threads (fitted with socket head plugs with tapered threads)

6 - Bevelled ends

Specify bevelled end details: angle of bevel and gap dimension, if applicable

7 - External coating

Specify the external coating, if applicable.

Usually weld collars are uncoated, unless there is a specific requirement due to transport and long term storage

8 - Material

Specify the material, type and grade.

Material is normally specified to AS/NZS 3678 or AS/NZS 3679. Alternate materials are available upon request

Steel fitting	Weld collar	Inside diameter mm	Plate thickness mm	Weld collar width mm	Lugs	Test holes	Bevelled ends	Coating	
Y	W	0 6 6 0	0 6	1 5 0	N	T	N	U	
Diameters		Wall thickness		Collar width		Test holes		Coating	
	From	To	5	5mm wall	100mm	N	No test holes	U	Uncoated
<999	0	999	6	6mm wall	150mm	T	Test holes	B	Blast clean
Axx	1000	1099	8	8mm wall	200mm			M	Metallised
Bxx	1100	1199	A	10mm wall	250mm			Z	Inorganic zinc
Cxx	1200	1299	B	12mm wall	300mm			X	Special coating ³
Dxx	1300	1399	X	Special WT ¹	X				
Exx	1400	1499			Lugs				
Fxx	1500	1599			N	No lugs			
Gxx	1600	1699			1	Lug - 1 bolt			
Hxx	1700	1799			2	Lug - 2 bolt			
Ixx	1800	1899							
Jxx	1900	1999							
Kxx	2000	2099							
Lxx	2100	2199							
Mxx	2200	2299							
Nxx	2300	2399							
Oxx	2400	2499							
Pxx	2500	2599							

- 1 - Specify wall thickness
- 2 - Specify width
- 3 - Specify special coating requirement details



STEEL MAINS PROPRIETARY LIMITED

125-127 PATULLOS LANE, SOMERTON, VICTORIA 3062 / WWW.STEELMAINS.COM
PHONE +61 (0)3 9217 3110 / EMAIL MARKETING@STEELMAINS.COM

All Steel Mains trademarks and logos are owned by Steel Mains Proprietary Limited. All other brand or product names are trademarks or registered marks of their respective owners. Because we are continuously improving our products and services, Steel Mains reserves the right to change specifications without prior notice. SMWCTD0515 © 2015 Steel Mains Proprietary Limited. All Rights Reserved.