

FLANGES

TECHNICAL DATA

SINTAKOTE® STEEL PIPELINE SYSTEMS



Steel Mains Steel Pipeline Systems flanges are available across a full size range and are specifically manufactured to match the steel pipe or branch shell diameter nominated.

Flanges are generally manufactured in accordance with AS 4087 or AS 2129 depending on the design requirements.

Flanges to alternative or international standards are also manufactured by Steel Mains, however please consult with Steel Mains prior to placing orders to confirm availability.

Tailor made flanges can also be manufactured to meet specific design requirements. These can be supplied from a range of materials including stainless steel and are designed to ensure compatibility with both mating surfaces and bolting requirements.

- Consult the Steel Mains Steel Pipeline Systems Design manual for design information
- Check with Steel Mains on material availability prior to placing any orders

GENERAL APPLICATION

Steel Mains Flanges for Steel Pipeline Systems are suitable for use with potable water and waste water in above and below ground applications.*

For special application requirements, beyond what is specified in this datasheet, please contact Steel Mains.

*Only applies to Steel Mains recommended coating and lining systems. Please consult the design manual for further details.

TECHNICAL DATA

Size Range

114mm to 2500mm diameter

Operating Pressures

Maximum 3500kPa

Operating Temperatures

-40°C to 70°C

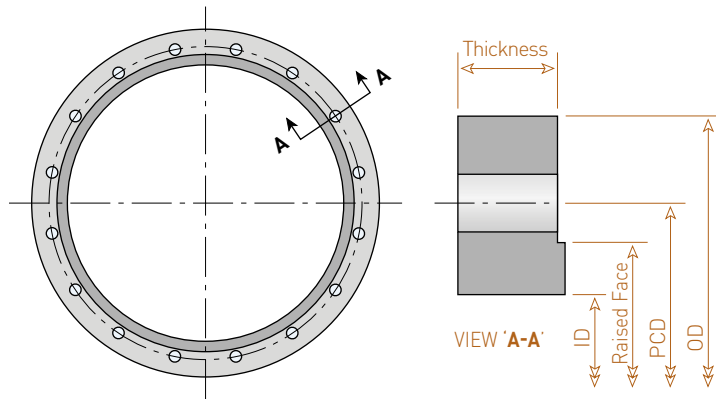
Certifications

AS/NZS ISO 9001

AS/NZS 4020

AS 1579 Standards Mark

IDENTIFICATION OF FLANGES



Steel fitting	Flange	Flange type	Flange rating	Nominal bore diameter mm	Actual flange bore	Face type	Coating
Y	F	L	D	0600	0610	F	S
Flange types						Flange face	
B Loose blind						F Flat face	
L Loose slip-on						R Raised face	
W Loose weld neck						O O-ring seal	
Flange rating						Coating	
C AS2129 - Table C						S Sintakote	
D AS2129 - Table D						U Uncoated	
E AS2129 - Table E						Z Zinc paint	
F AS2129 - Table F						E Epoxy	
H AS2129 - Table H						X Special coating ²	
1 AS4087 - PN16						1 - Specify special end type requirements	
2 AS4087 - PN21						2 - Specify special coating requirement details	
3 AS4087 - PN35							
X Other Please specify ¹							

SPECIFYING FLANGES

1 - Type

Determine the flange type:

- blind
- slip-on
- weld neck

2 - Flange rating

Specify the flange Standard:

- AS4087
- AS2129 or other

Determine the pressure requirements for the flange PN rating, (e.g. PN 16 –equivalent to 1600KPa, 16 Bar or approximately 160 metres of head)

3 - Diameter

Nominate the nominal bore diameter in mm (DN), according to the applicable flange standard

4 - Flange bore

Nominate the actual flange bore in mm. For slip-on and weld neck flanges, nominate the pipe, or branch, steel shell outside diameter. A flange bore diameter is also required for blind flanges where an internal coating system is to be applied

5 - Face type

Specify the flange face requirements

- Flat face
- Raised face
- O-ring seal

6 - Coating

Specify the external coating of the flange, if required

7 - Holding coat

Specify if a temporary holding coat is required on the flange, including the flange face. This will extend the storage life of the flange

The holding coat is generally a weldable zinc paint up to 50µm in thickness

All flange faces will be supplied with a light oil film for temporary protection

8 - Material

Material is generally to AS/NZS 3678. Alternative material types and grades should be specified if required



STEEL MAINS PROPRIETARY LIMITED

125-127 PATULLOS LANE, SOMERTON, VICTORIA 3062 / WWW.STEELMAINS.COM
PHONE +61 (0)3 9217 3110 / EMAIL MARKETING@STEELMAINS.COM

All Steel Mains trademarks and logos are owned by Steel Mains Proprietary Limited. All other brand or product names are trademarks or registered marks of their respective owners. Because we are continuously improving our products and services, Steel Mains reserves the right to change specifications without prior notice. SMFLTD0515 © 2015 Steel Mains Proprietary Limited. All Rights Reserved.