



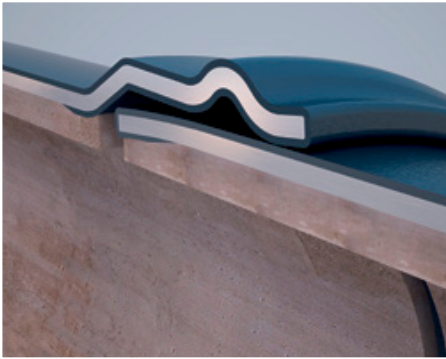
# SINTAJOINT® & SINTALOCK® RUBBER RING JOINTS



---

Rubber ring joints provide several advantages over welded joints including faster laying rates, less maintenance and speedy backfilling. Steel Mains Sintajoint and Sintalock rubber ring joint technology allows for pipes to be laid as fast as one pipe every 3 minutes.

**SINTAJOINT®**  
RUBBER RING JOINT (RRJ)



Sizes: 324mm to 1829mm OD  
Joint deflection: Up to 3°  
Pressure rating: Up to PN 42.5

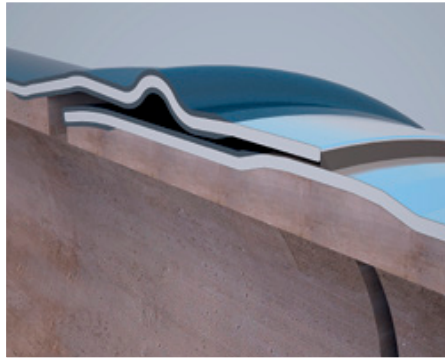
Wall Thickness: Up to 12mm

**ADVANTAGES**

- Extremely fast installation speeds
- Fastest pipe lay rates
- No additional joint corrosion protection required
- Electrically insulated joint
- Fully protected joint internally for aggressive fluids

**BEST FOR:** Straight runs—where high installation rates can be achieved

**SINTALOCK®-TYPE I**  
RUBBER RING JOINT + WELD



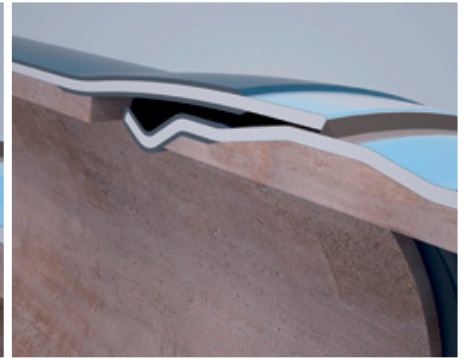
Sizes: 324mm to 1422mm OD  
Joint deflection: 1.1°  
Pressure rating: Dependant on diameter and wall thickness  
Wall thickness: Up to 10mm

**ADVANTAGES**

- External fillet weld only
- Full axial restraint
- No internal reinstatement
- Enables pneumatic field testing of joint
- Fully protected joint internally for aggressive fluids

**BEST FOR:** Combining the speed and efficiency of Sintajoint RRJ with the full restraint of a welded connection—laying can continue ahead of weld completion

**SINTALOCK®-TYPE II**  
RUBBER RING JOINT + WELD



Sizes: 502mm to 1829mm OD  
Joint deflection: 1.1°  
Pressure rating: Up to PN 42

Wall thickness: Up to 12mm

**ADVANTAGES**

- External fillet weld only
- High strength full axial restrained rubber ring joint
- No internal reinstatement
- Enables pneumatic field testing of joint
- Fully protected joint internally for aggressive fluids

**BEST FOR:** Combining the speed and efficiency of Sintajoint RRJ with the full restraint of a welded connection in high pressure pipelines

[WWW.STEELMAINS.COM](http://WWW.STEELMAINS.COM)

**REGIONAL SALES OFFICES**

QUEENSLAND  
NORTHERN TERRITORY  
NSW-NORTHERN  
P 07 3435 5506  
M 0428 818 436  
greg.kennedy@steelmains.com

NEW SOUTH WALES  
M 0484 193 196  
carl.mackaway@steelmains.com

VICTORIA, TASMANIA  
NEW ZEALAND  
PACIFIC ISLANDS  
P 03 9217 3111  
M 0400 847 587  
joe.elzein@steelmains.com

SOUTH AUSTRALIA  
WESTERN AUSTRALIA  
P 08 9437 8204  
M 0459 896 932  
amir.vahdani@steelmains.com

EXPORT  
P +61 3 9217 3170  
M +61 418 384 109  
rodney.glocer@steelmains.com

**STEEL MAINS PROPRIETARY LIMITED**

125-175 PATULLOS LANE  
SOMERTON, VICTORIA 3062

All Steel Mains trademarks and logos are owned by Steel Mains Proprietary Limited. All other brand or product names are trademarks or registered marks of their respective owners. Because we are continuously improving our products and services, Steel Mains reserves the right to change specifications without prior notice. SMRRJ1705  
© 2017 Steel Mains Proprietary Limited.  
All Rights Reserved.