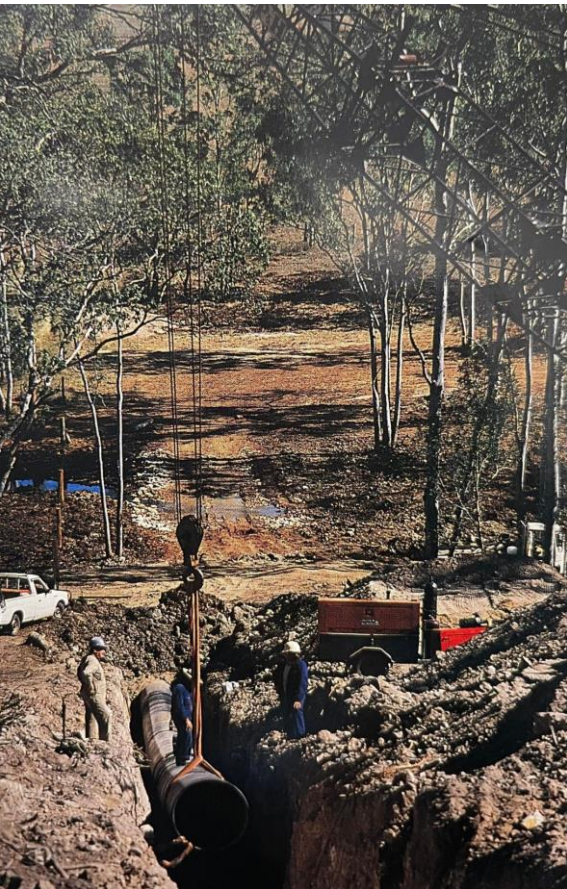


Southern Isis Irrigation Scheme - QLD

When under pressure irrigators rely on Sintakote

MSCL Pipe



Objectives:

22-year project waters huge area

The largest sugar producing region in Queensland, 31,000 hectares of productive farmland, receives its vital water for agriculture from the Bundaberg Irrigation Area.

Commenced in 1970 by the Water Resources Commission, the Bundaberg scheme is the most ambitious undertaken in the state and includes five complete irrigation systems.

Among these is the (Canegrowers) Southern Isis Irrigation System. The heart of Isis is the Childers Main Channel – supplying irrigation water to approximately 2,500 hectares of sugarcane fields and raw water to the town of Childers. To reach the end of Childers Main Channel, water is pumped and gravitated some 48 kilometres from the Burnett River.

Water pumped from the river enters the Isis Balancing Storage, gravitates to the Quart Pot Creek Pump Station via the Isis Main Channel and is then pumped into Cordalba Reservoir which serves the Childers Main Channel.

Challenge:

Hard Yakka beats timetable

Two sections of the Childers Main Channel were laid ahead of schedule in 38 days during 1991, with the final section commissioned shortly thereafter. Conditions were difficult for the Water Resources Commission's day labour force, working in grazing land with one section of the channel crossing beneath the Bruce Highway, immediately south of Childers. Subsurface conditions were a contrasting mix of rock on the ridges and wet, swampy, plastic clays in the gullies with water inflow at some locations. Fortunately for the project, dry weather prevailed throughout the construction period.

Solution:

3300 metres under pressure

High pressure sections of the Childers Main Channel are critical to the performance of the entire system. These include three sections of piping totaling approximately 3300 metres – approximately 850 metres of 1125mm O.D and 2,450 metres of 960mm O.D. For this important component of the Canegrowers Isis System, the Water Resources Commission selected SINTAKOTE mild steel, cement mortar-lined pipes supplied by Steel Mains.

Southern Isis Irrigation Scheme

Client Water Resources Commission
(Queensland)

Project Childers Main Channel

Pipeline 2,450m of 960 OD × 6.1mm
& 850m of 1125 OD × 8.0mm
WT SINTAKOTE MSCL Pipe,

Construction WRC Day Labour

Construction Period June - November 1991