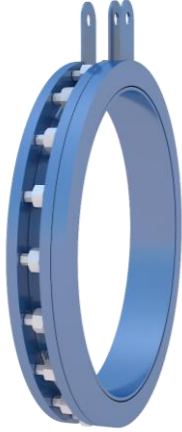


## COMPACT DISMANTLING JOINT

DN 100 TO DN 1200 RESTRAINED

---



NEW PATENTED\* COMPACT DISMANTLING JOINT



COMPACT DISMANTLING JOINT INSTALLED

### FEATURES

---

Steel Mains' new and improved unique patented\* Compact Dismantling Joint features the following benefits over existing designs:

- Reduced mass for easy handling
- 100% restrained - External flange bolts "sandwich" the Compact Dismantling Joint
- Significantly reduced length requirements
- Easy installation and removal for servicing pipeline components
- Angular misalignment tolerance
- Integrated effective sealing system activated by compression
- Suitable for high pressure applications

### DESCRIPTION

---

Steel Mains' Compact Dismantling Joint design is highly advanced with upgraded features. The length of the joint is now shorter compared to previous designs, enabled by the Integrated Seal Design and reduced thickness of the Sealing Flanges. The joint can now be safely installed in tight and constricted locations or where space is at a premium.

The complete assembly is sandwiched in compression between the Pipe Flange and the Pipeline Component making it one of the easiest dismantling joints to install and remove, saving time and money.

## COMPACT DISMANTLING JOINT

DN 100 TO DN 1200 RESTRAINED

### SPECIFICATIONS

MATERIALS & STANDARDS	
<b>Flange Drilling</b>	AS 4087, AS 4331 or to customer specification *
<b>Steel</b>	Grade 250 Steel (min) to AS1594
<b>Compression Bolts</b>	316 Stainless steel grade A4 property class 70 to ISO 3506-1
<b>Nuts</b>	AS 1112.1 Class A4-70
<b>Coating</b>	AS/NZ 4158
<b>Sealing</b>	EPDM Rubber to AS 1646



### TECHNICAL DATA

**Size Range** 100 to 1200mm<sup>^</sup>

**Rated Pressures** PN16 and PN35

**Temperature Range** -40° to 70° C

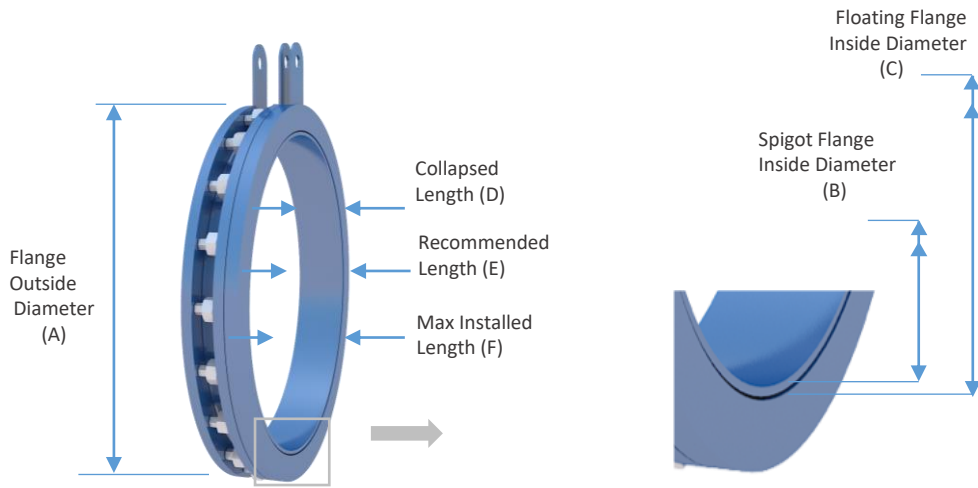
**Standards** AS 1579 – Arc-welded steel pipes and fittings for water and waste water

**Certifications** Certified to AS/NZS 4020 – Suitable for contact with drinking water

\* For bespoke sizes and pressures please contact your local Steel Mains Regional Sales Office

# COMPACT DISMANTLING JOINT

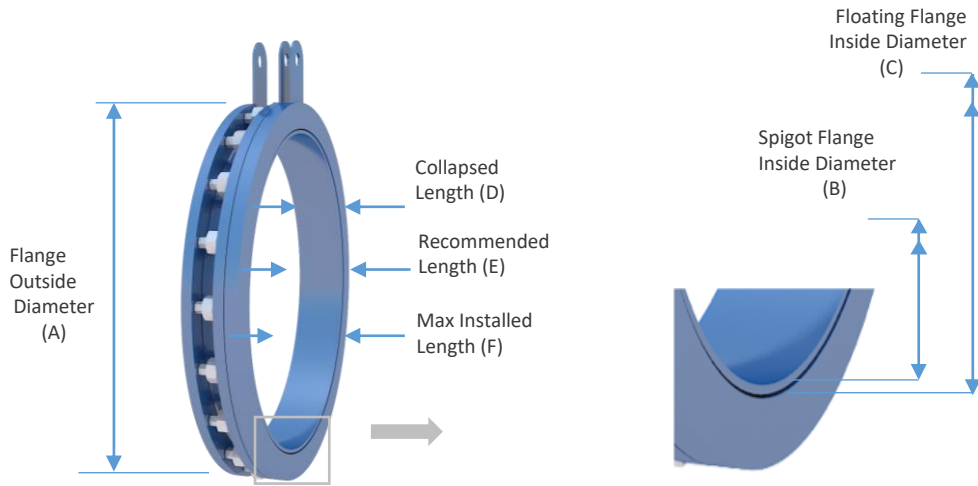
DN 100 TO DN 1200 RESTRAINED (PN16)



Size	Drill Table AS4087	Flange Outside Diameter (A)	Spigot Flange I.D. (Bore) (B)	Floating Flange I.D. (C)	Collapsed Length (D)	Recommended Installed Length (E)	Maximum Installed Length (F)	Maximum angular deflection
DN100	PN16	160	92	104	80	92	100	3.6
DN150	PN16	217	140	152	80	92	100	3.7
DN200	PN16	274	193	209	80	92	100	3.3
DN225	PN16	306	222	238	80	92	100	3.0
DN250	PN16	334	229	247	85	97	105	2.7
DN300	PN16	384	289	308	85	97	105	2.4
DN350	PN16	444	334	352	100	112	120	2.1
DN375	PN16	469	363	380	100	112	120	2.0
DN400	PN16	495	390	408	100	112	120	1.9
DN450	PN16	558	441	459	100	112	120	1.6
DN500	PN16	615	488	510	100	112	120	1.5
DN600	PN16	726	590	612	112	132	142	1.3
DN700	PN16	815	687	713	112	132	142	1.4
DN750	PN16	894	750	776	120	140	150	1.3
DN800	PN16	948	789	815	120	140	150	1.2
DN900	PN16	1056	890	916	120	140	150	1.1
DN1000	PN16	1139	992	1018	120	140	150	1.0
DN1200	PN16	1374	1176	1202	120	140	150	0.8

# COMPACT DISMANTLING JOINT

DN 100 TO DN 1200 RESTRAINED (PN35)



Size	Drill Table AS4087	Flange Outside Diameter (A)	Spigot Flange I.D. (Bore) (B)	Floating Flange I.D. (C)	Collapse Length (D)	Recommended Installed Length (E)	Maximum Installed Length (F)	Maximum angular deflection
DN100	PN35	173	85	101	80	92	100	3.6
DN150	PN35	238	136	152	85	97	105	3.5
DN200	PN35	302	198	214	85	97	105	3.0
DN225	PN35	330	220	238	100	112	120	2.8
DN250	PN35	355	250	268	100	112	120	2.6
DN300	PN35	412	302	320	100	112	120	2.2
DN350	PN35	465	347	365	112	132	142	2.5
DN375	PN35	491	371	389	112	132	142	2.3
DN400	PN35	522	386	408	112	132	142	2.2
DN450	PN35	577	445	467	120	140	150	2.0
DN500	PN35	640	488	510	120	140	150	1.8
DN600	PN35	745	590	612	120	140	150	1.5
DN700	PN35	821	679	705	120	140	150	1.4
DN750	PN35	904	750	776	120	140	150	1.3
DN800	PN35	948	804	830	120	140	150	1.2
DN900	PN35	1066	906	940	130	150	160	1.1
DN1000	PN35	1155	1000	1030	130	150	160	1.0
DN1200	PN35	1399	1212	1254	130	150	160	0.8

**STEEL MAINS PROPRIETARY LIMITED**

125-175 PATULLOS LANE, SOMERTON VICTORIA 3062 /WWW.STEELMAINS.COM

PHONE (03) 9217 3110 / EMAIL MARKETING@STEELMAINS.COM

All Steel Mains trademarks and logos are owned by Steel Mains Proprietary Limited. All other brand or product names are trademarks or registered marks of their respective owners. Because we are continuously improving our products and services, Steelmains reserves the right to change specifications without prior notice. SMSLTD50320 © 2020 Steel Mains Proprietary Limited. All Rights Reserved.

\* Australian Patent. International Patents pending